

Cutler School

School Zone



What are School Zones?

- School Zone speed limits are statutory speed limits.
- Speed limits within a School Zone must be set at 20 mph.
- Speed Limits within a School Zone are only in effect during days of the week and hours of the day when children are accessing the school grounds.

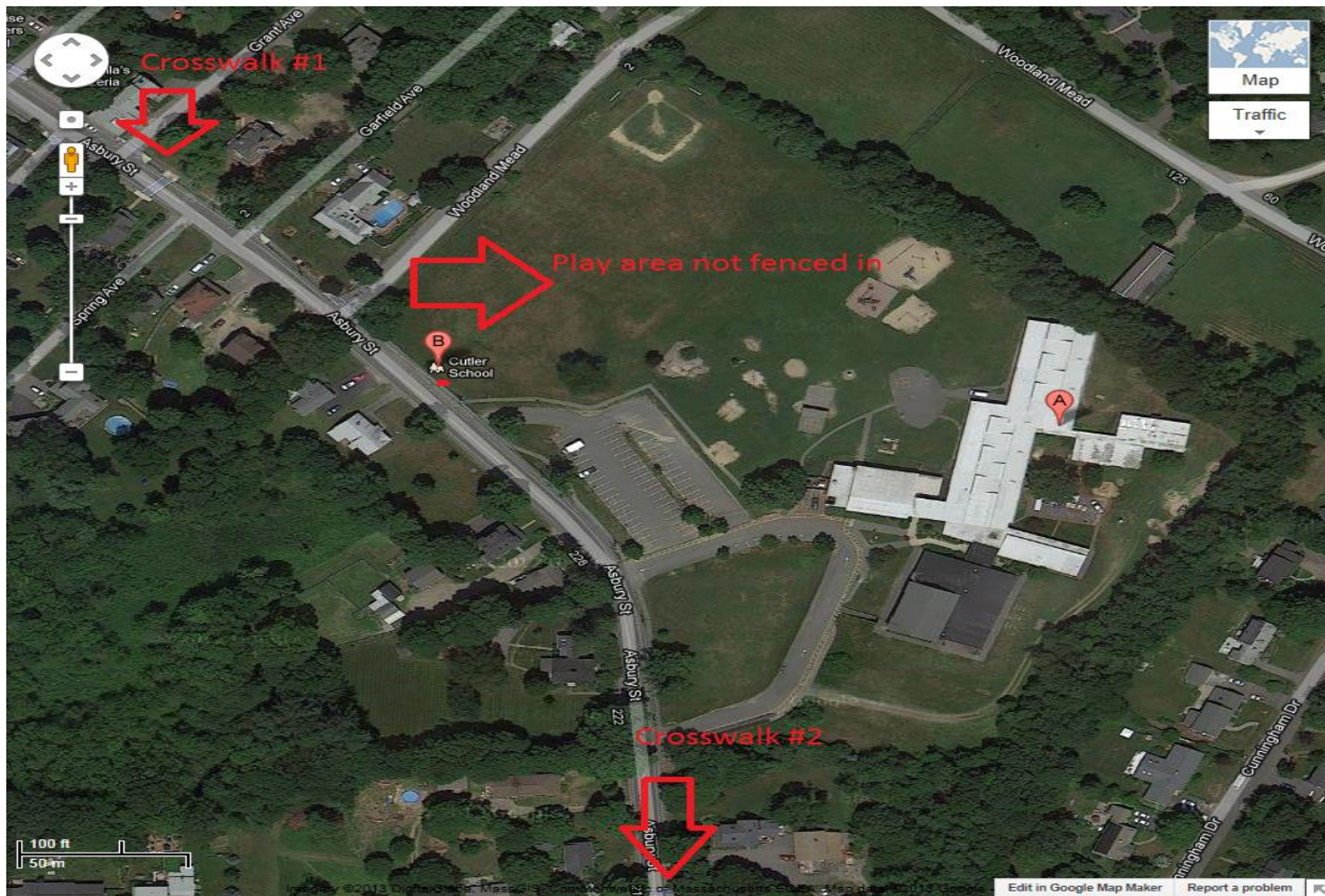
Requirements

- The Cutler School passes all the necessary requirements for a school zone, which are as follows:
 - Children must have direct access to the street from the property
 - There must be a marked crosswalk. (There are two)
 - The school must involve one or more grades below grade 9
 - The school must abut the public right of way

Why is this school zone needed?

- The Cutler School is an elementary school with young children.
- Current Speed Limit is 30 MPH in both directions.
- There are two crosswalks where children could potentially cross the street.
- Curves make this area dangerous for fast moving vehicles and children crossing the street.
- The outside play area for the children is not fenced in and is relatively close to the street.

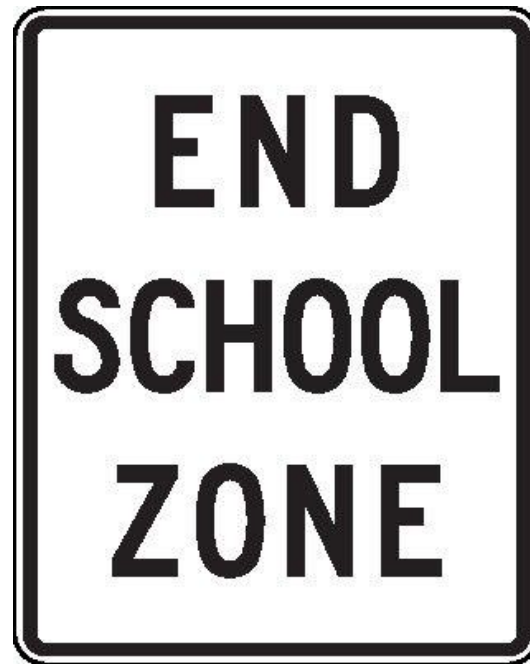
Why is this school zone needed?



School Zone and Signs

- Non-illuminated sign indicating school zone, accompanied by a supplementary sign indicating hours when in effect or “When Children Are Present”
- The zone shall not begin more than 300 feet from the school grounds
- There shall be “School Zone Ahead” signs before entering the zone as well as “End School Zone” signs if the area is not legally speed zoned within 50 feet of the end of the school zone

School Zone Signs Necessary



Sign Locations

- One of the school zone signs would be placed 300 feet from the northern part of the school, just after the crosswalk. As a reference point it is 24 feet from the crosswalk sign.



Sign Locations

- The other school zone sign would be placed 300 feet after the school in the other direction, which is after a crosswalk as well. As a reference point, electrical pole number 608 is 305 feet from the boundary of the school. This area has many bushes, trees, and a pole so this sign would be better placed before 300 feet.

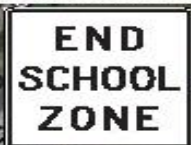


Approximate location of sign.

Add School Zone Again Sign.



Add End School Zone Sign.



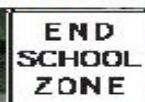
Add School Zone sign with "20mph When Children Are Present"



Cutler School



Add End School Zone sign.



Add School Zone sign.



Add School Zone ahead sign

