

HAMILTON

PATTON

PARK

# Master Plan Visioning Session #1

November 17, 2022 - 6:30 pm

# PATTON PARK

## Project Goals and Timeframe



AGENDA FOR TONIGHT'S MASTER PLAN VISIONING SESSION  
PROJECT OVERVIEW - TEAM  
PROJECT OVERVIEW - SCHEDULE

# PROJECT OVERVIEW

## Tonight's Agenda

- Project Overview
  - Project Team
  - Project Schedule
  - Master Plan Goals
- Existing Conditions
  - Site Context
  - Site Photographs
  - Site Analysis
- Initial Feedback
  - Pumpkin Fest Feedback from October 29
- Community Feedback

# PROJECT OVERVIEW

## Project Team

- Town of Hamilton:
  - Sean Timmons, Director, Hamilton-Wenham Rec. Dept.
  - Timothy Olson, Director, Hamilton Dept. of Public Works
- CBA Landscape Architects LLC:
  - Megan Tomkins, Principal-in-Charge
  - Preston Holleman, Project Staff
  - Polly Sinclair, Project Staff
- You! We value your feedback and ideas.

Pop-Up #1 at Pumpkin Fest (October 29, 2022): CBA informally introduced the Master Plan project and solicited feedback from Pumpkin Fest attendees.

Visioning Session #1 (November 17, 2022): Presentation of existing conditions, site analysis, and design challenges. Discussion of community concerns, park context, and design opportunities.

Public Feedback Survey #1 (late November-early December 2022): Web-based survey will be opened and publicized to invite community feedback on specific park planning priorities and design considerations.

Visioning Session #2 (December 13, 2022, 6:30-8PM - Hamilton-Wenham Public Library): CBA will present additional information obtained from the online survey; as well as design options and materials palette options.

Pop-Up #2 (TBD): An additional pop-up is expected at a to-be-determined community event. Master Plan progress will be available at this event.

Final Master Plan (January/February 2023): CBA will provide the final Master Plan report to the Town.

Construction (TBD, phasing anticipated): Depending on final Master Plan priorities and funding availability, construction is expected to be phased.

Patton Park is a well-loved resource for the Town of Hamilton. **Many of the current park uses are successful, popular with users and Hamilton residents, and likely do not need to change.**

However, the Town has identified several focus areas in which the park could be improved in the long term. **This Master Planning process is intended to engage park users and residents in the process of identifying overarching and long term improvement goals for Patton Park.**

**Once the Master Plan Goals have been identified, the design team, along with the Town, will develop a budget and schedule for implementing improvements.** Improvements will be implemented on a phased basis, as funding becomes available.

# PATTON PARK

Park Context and Site Analysis



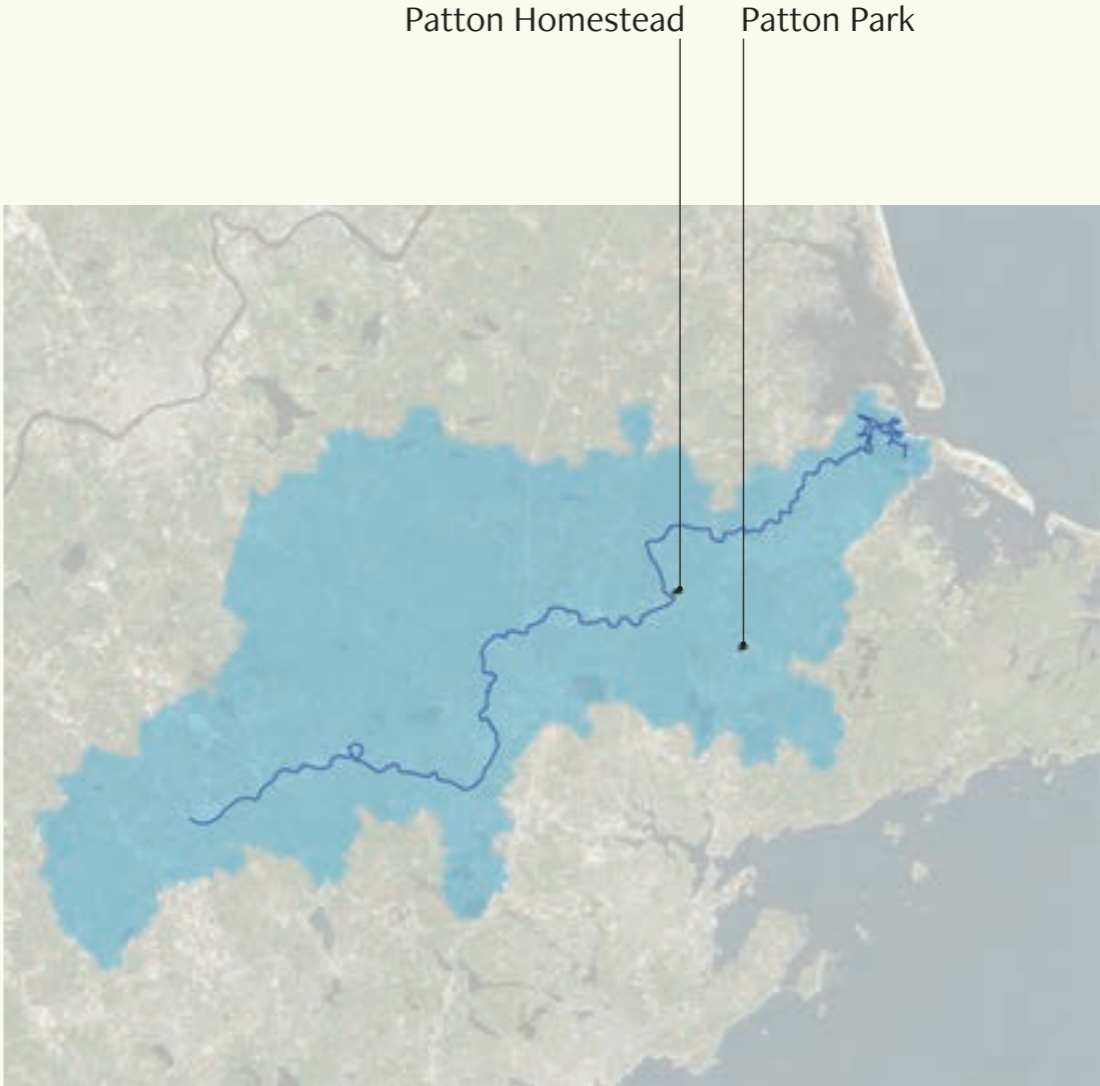
PARK CONTEXT  
SITE ANALYSIS  
EXISTING CONDITIONS

# PARK CONTEXT : Park Location



\*image from the NativeLand Project

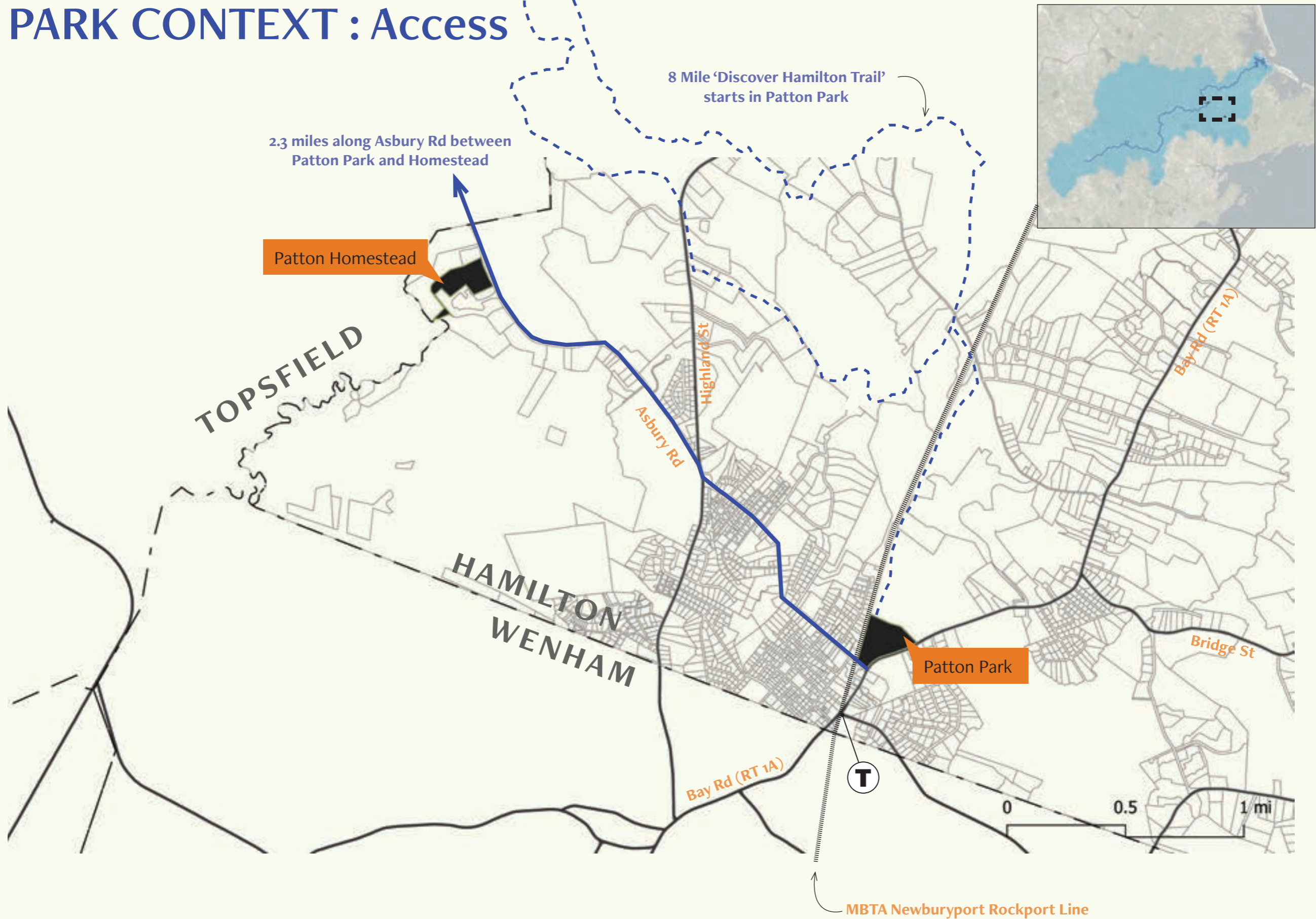
**Patton Park is located on the homelands of the Agawam and Pawtucket Nations**



**Ipswich Watershed**

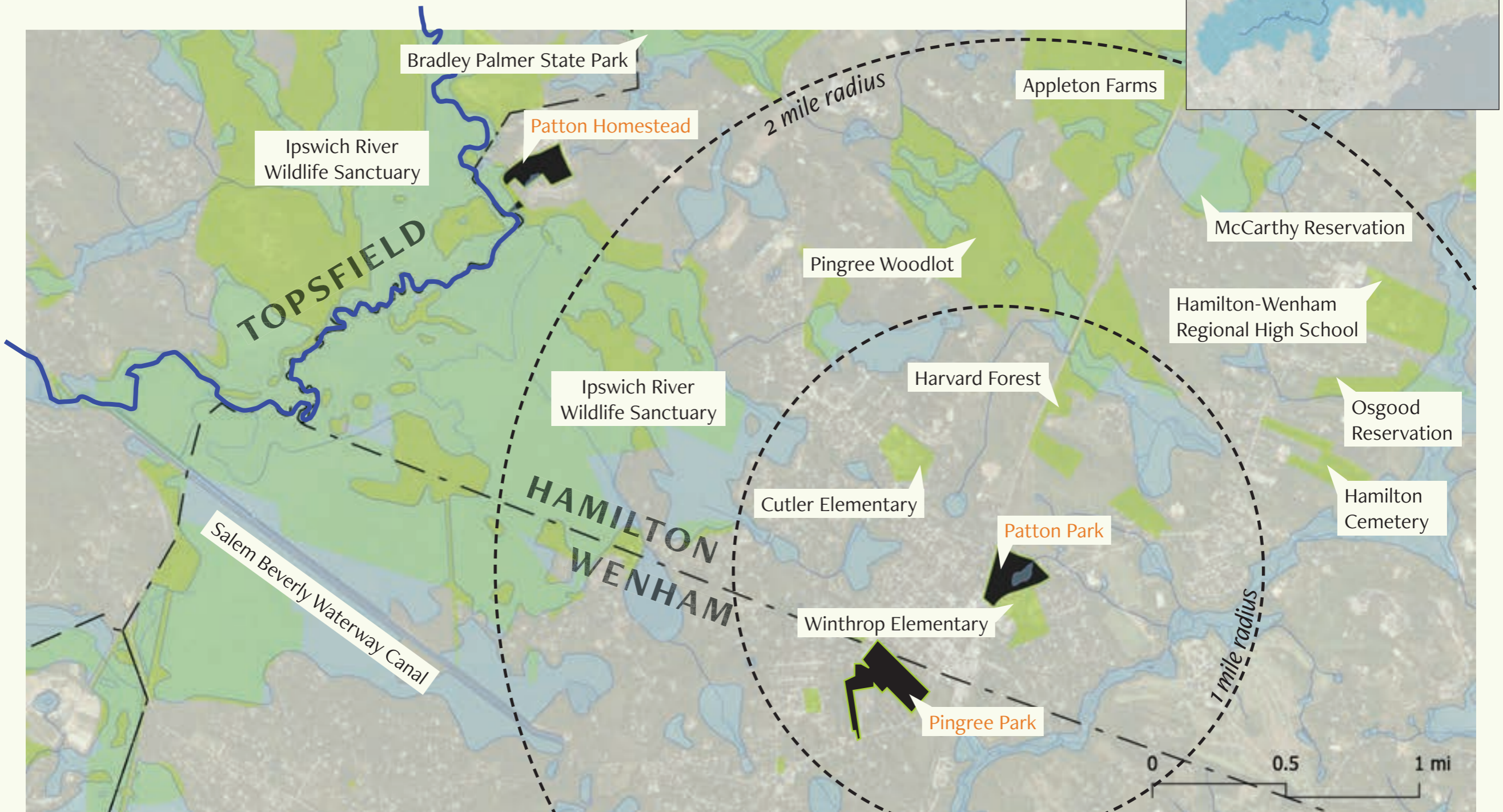


# PARK CONTEXT : Access



# PARK CONTEXT : Open Space

## Publicly Accessible Open Space Near Patton Park



# PARK CONTEXT : Cultural History

## Ice Skating on Weaver Pond



\* Photo from 1942; image from the Hamilton Historical Society Digital Archives.

# PARK CONTEXT : Cultural History

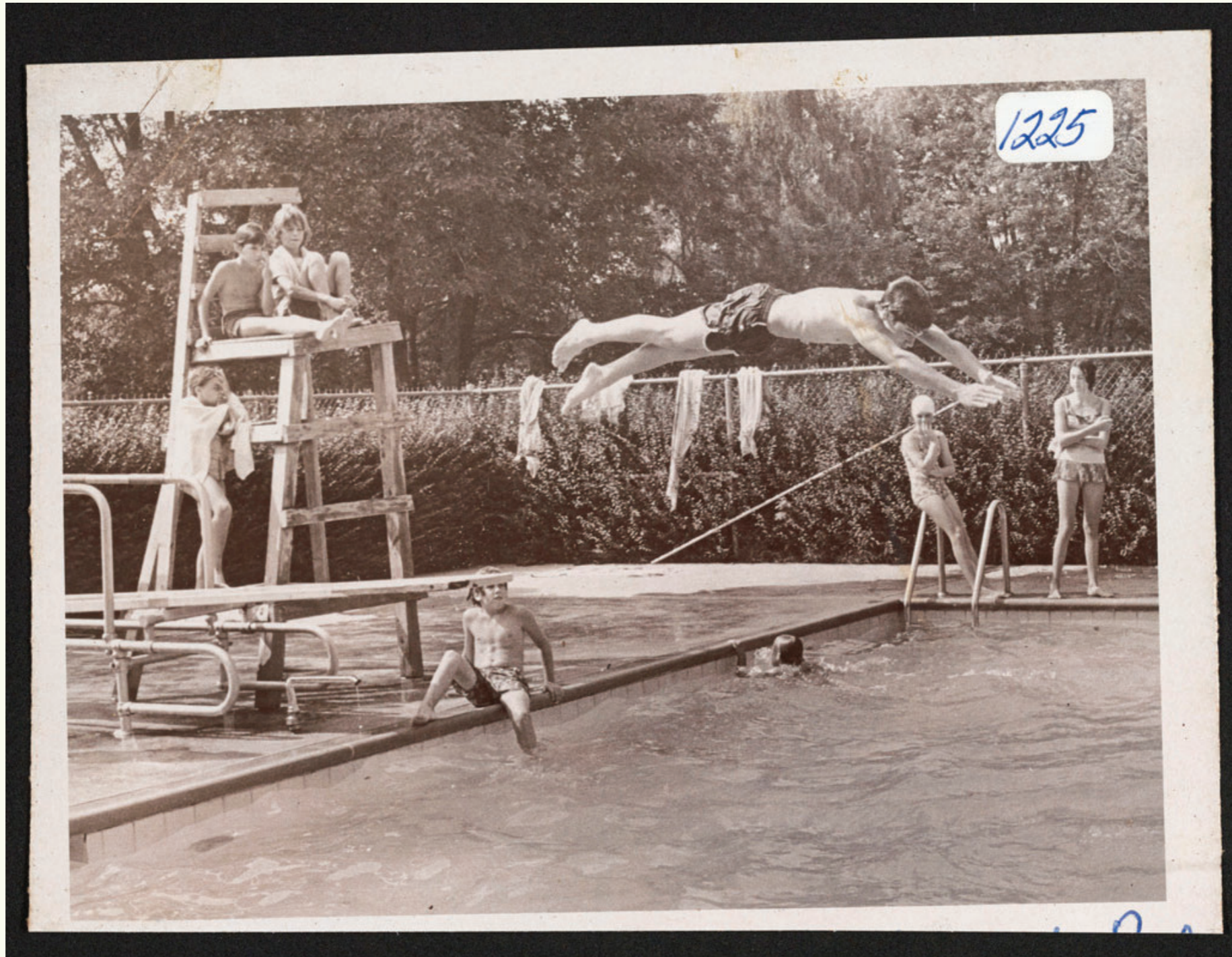
## Playing along the Willow Lined Banks of Weaver Pond



\* Photo date unknown; image from the Hamilton Historical Society Digital Archives.

# PARK CONTEXT : Cultural History

Public Pool Access (Pool Opened in 1962, Rennovated in 2017)



\*Photo from 1973; image from the Hamilton Historical Society Digital Archives

# PARK CONTEXT : Cultural Present and Future

Current Public Programs include Summer Concert Series and other Open Lawn Events



\*Photo from northshorekid.com

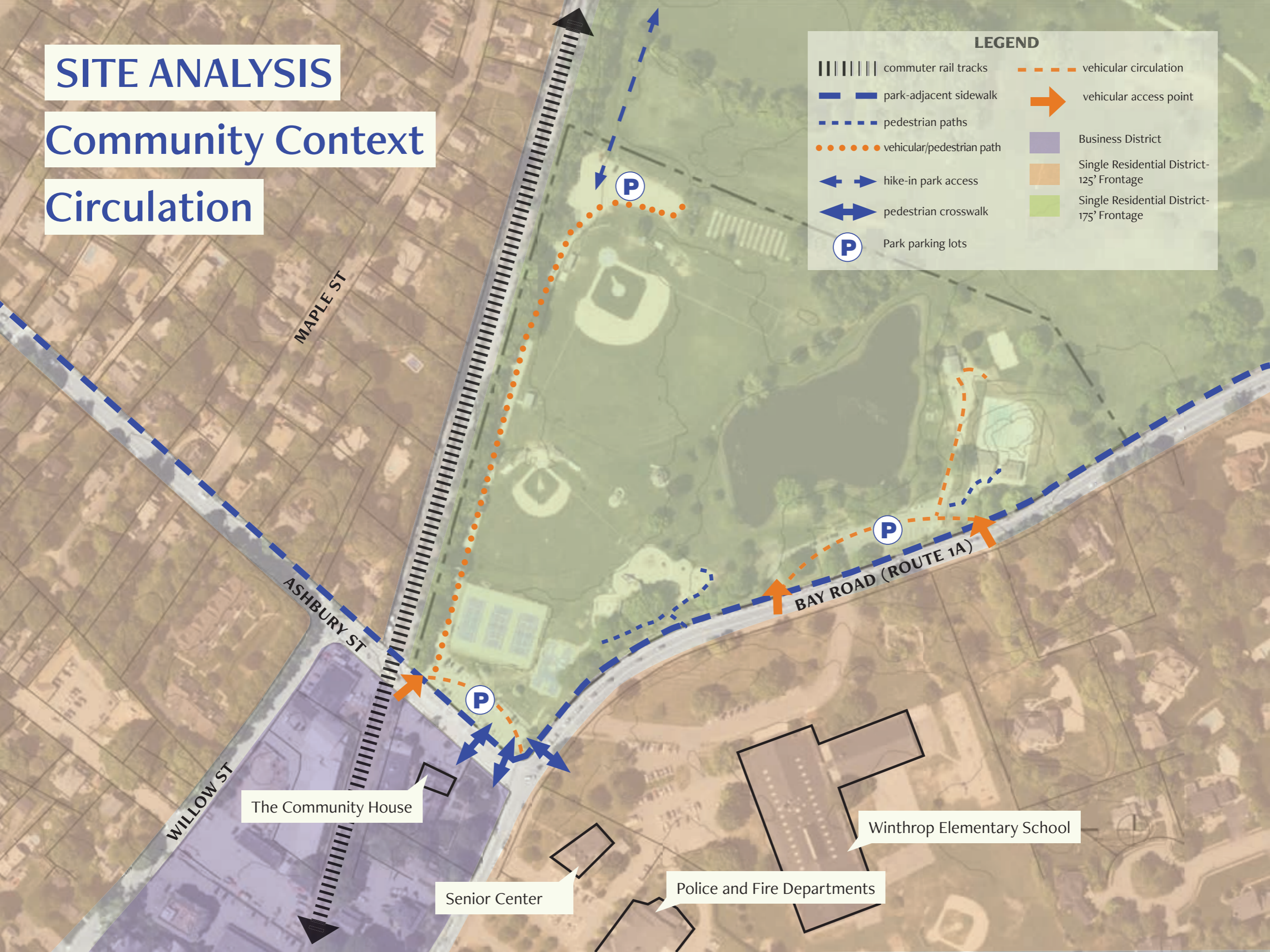
# SITE ANALYSIS

## Community Context

## Circulation

**LEGEND**

|             |                           |           |   |
|-------------|---------------------------|-----------|---|
|             | commuter rail tracks      | - - - - - | vehicular circulation                     |
| — — — — —   | park-adjacent sidewalk    | ➔         | vehicular access point                    |
| - - - - -   | pedestrian paths          |           |   |
| ● ● ● ● ●   | vehicular/pedestrian path |           |   |
| ← — — — — → | hike-in park access       |           |   |
| ↔           | pedestrian crosswalk      |           |   |
| (P)         | Park parking lots         |           |   |
|             |                           |           | Business District                         |
|             |                           |           | Single Residential District-125' Frontage |
|             |                           |           | Single Residential District-175' Frontage |



The Community House

Senior Center

Police and Fire Departments

Winthrop Elementary School

WILLOW ST

ASHBURY ST

MAPLE ST

BAY ROAD (ROUTE 1A)

# SITE ANALYSIS : Bird's Eye View from SouthEast



OTHER  
PARK  
AMENITIES



Bike Racks



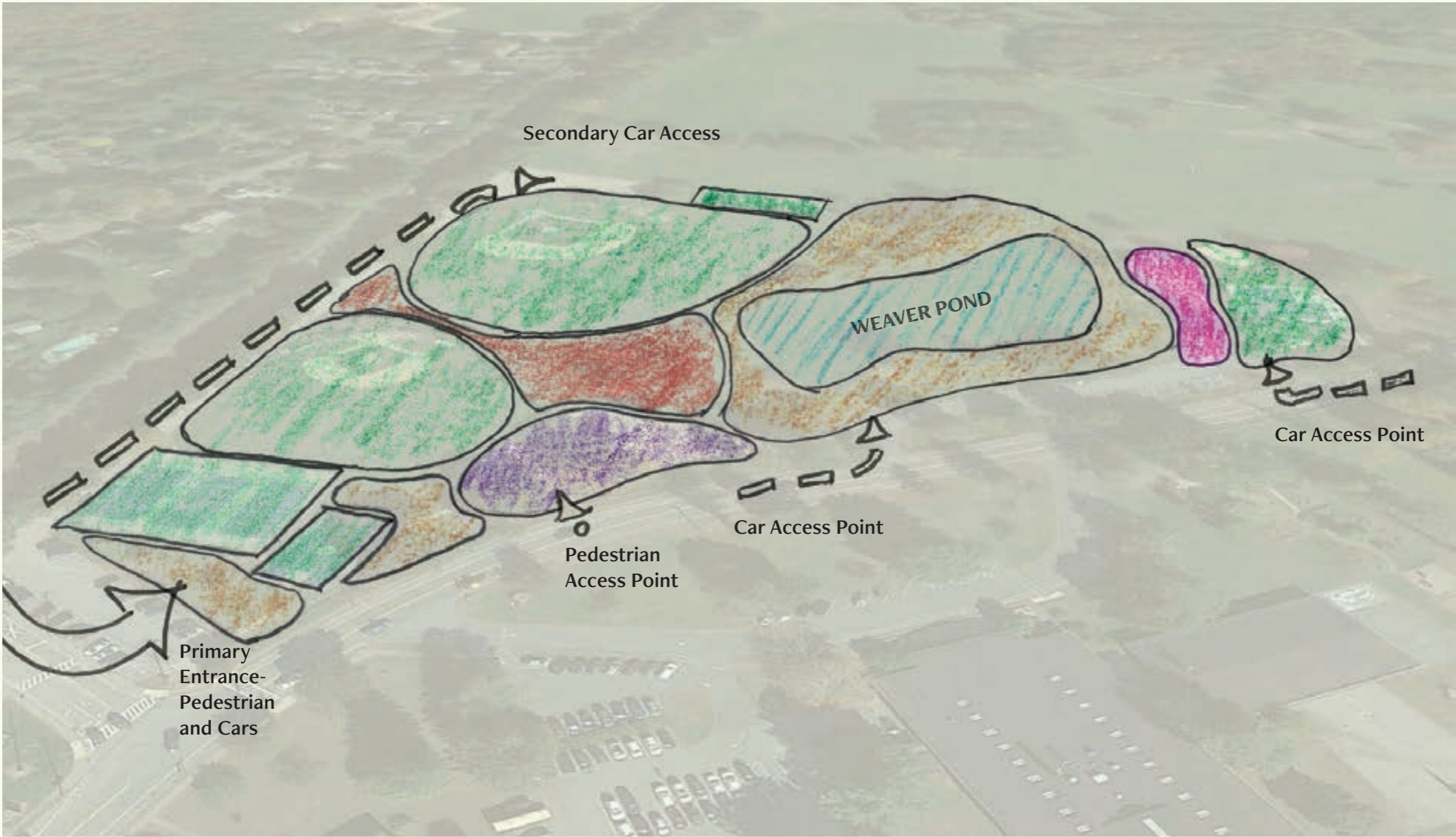
Bathrooms





Parking





# SITE ANALYSIS : Current Uses and Space



 Formal Recreation Spaces (Ball Courts, Ball Fields, Pool, etc.)

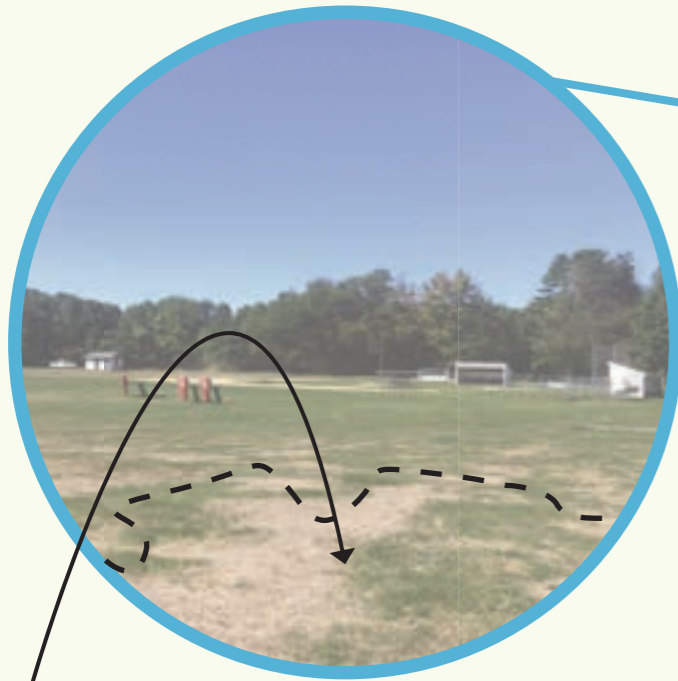
 Formal Playground

 Primary Open Lawn Area/Gathering Space

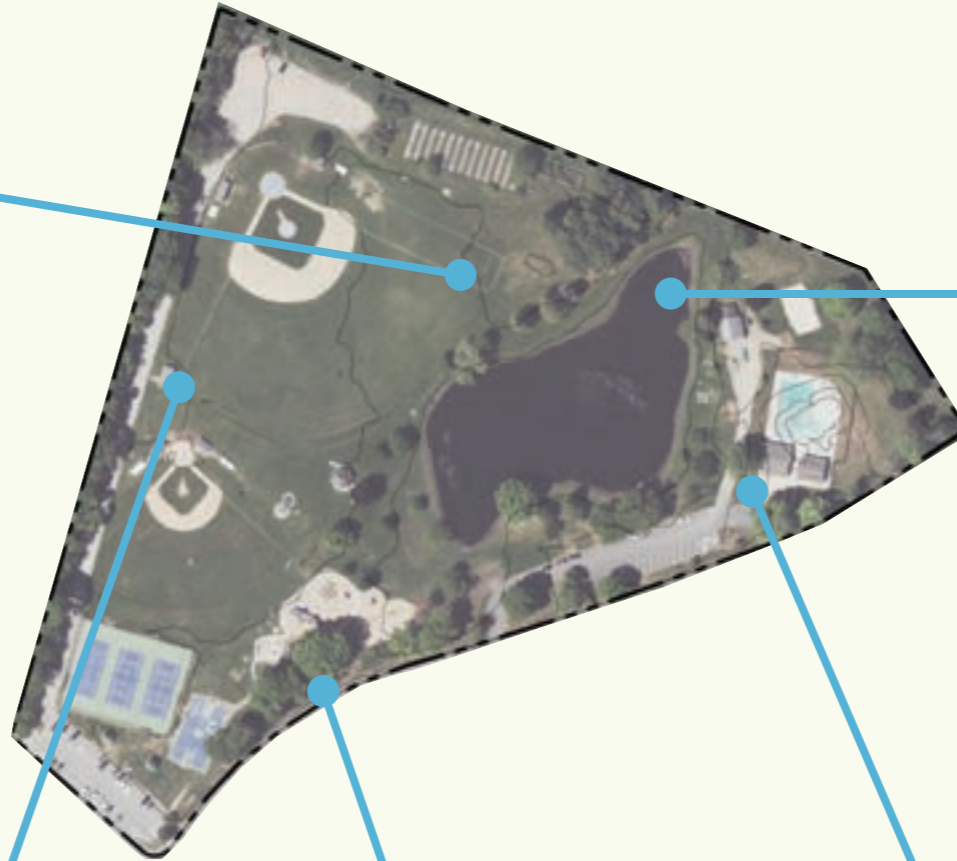
 Unprogrammed Open Lawn Space

 Park Maintenance Facilities

# EXISTING CONDITIONS



Team practice fields have drainage issues in some areas closer to Weaver Pond.



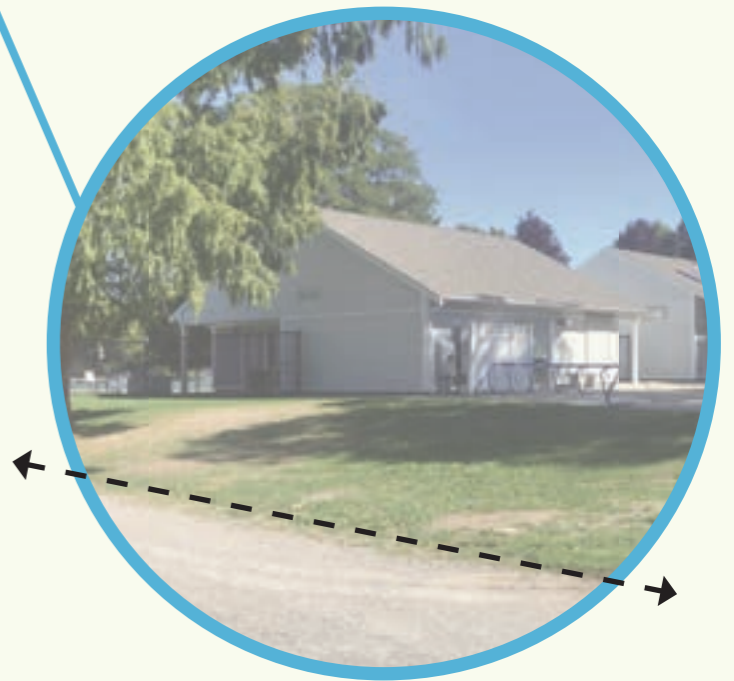
Weaver Pond has lots of mature trees and shade around the banks, but no formal pathways or gathering spaces.



Bathroom building is outdated and in a location disconnected from highly used park spaces like the playground.



The materials and design of site furniture throughout the park varies greatly.



Pool facilities are currently disconnected from the rest of the park.

# EXISTING CONDITIONS



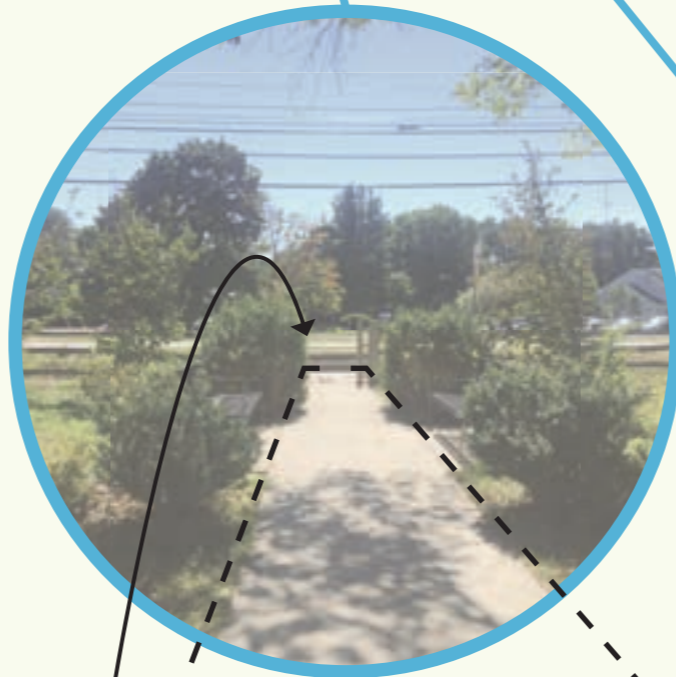
Back parking and horseshoe pits are disconnected from park's main areas



Maintenance shed and drive creates separation between pond and pool area



Pedestrian park entry at ball courts has a lack of accessible path entries and wayfinding.



Pedestrian park entry walk on Bay Street is not connected to a crosswalk.



Main gathering space is undefined and gazebo is in need of repairs.

# PATTON PARK

## Community Feedback

Feedback from Pumpkin Fest  
Help us Design!

# COMMUNITY FEEDBACK : Pumpkin Fest

Patton Park Hamilton | October 2022

CBA LANDSCAPE ARCHITECTS LLC



## What do you like about the park?

Zipline Siplin Monkey bars! - Emma  
 The playground  
 The pond  
 MONKEYBARS

Tea shop!

(Formalize AN Ice Arena)  
 FILL PITS

## What is missing at the park?

Disc Golf Baskets  
 \* Dog area! \* more seating pond  
 \* Dog park big zip line! picnic tables

Hamster Park

BIKE PUMP TRACK  
 Skate Park

Ice Rink!

See Saw  
 Lauren was here  
 Dummies

Splashpad + 1+2  
 Fencing around playground  
 ABBY  
 B.P.  
 Punter Dummies!

## How can the park be improved?

✓ MORE ACCESSIBILITY!  
 MORE CONDO PARKING!  
 MORE CONVENIENT RESTROOMS

SOMETHING WITH RUATS  
 GIANT CEMENT SLING  
 a shop add dog park  
 The monkey bars need to be taller

Remove weapons & war area the tanks  
 for the base ball guys

BIG SIGN THAT SAYS PATTON PARK  
 WHO IS GEN GEORGE PATTON?

WALKING PATH (PAVED)!!

## What do you usually do at the park?

EVERYTHING! Ducks  
 look for frogs frogs  
 dog ping ~~BAR~~ ZIP LINE

PLAY  
 swimming

chloe SUMCAMP

LIBBY



# COMMUNITY FEEDBACK

What is unique about the park?

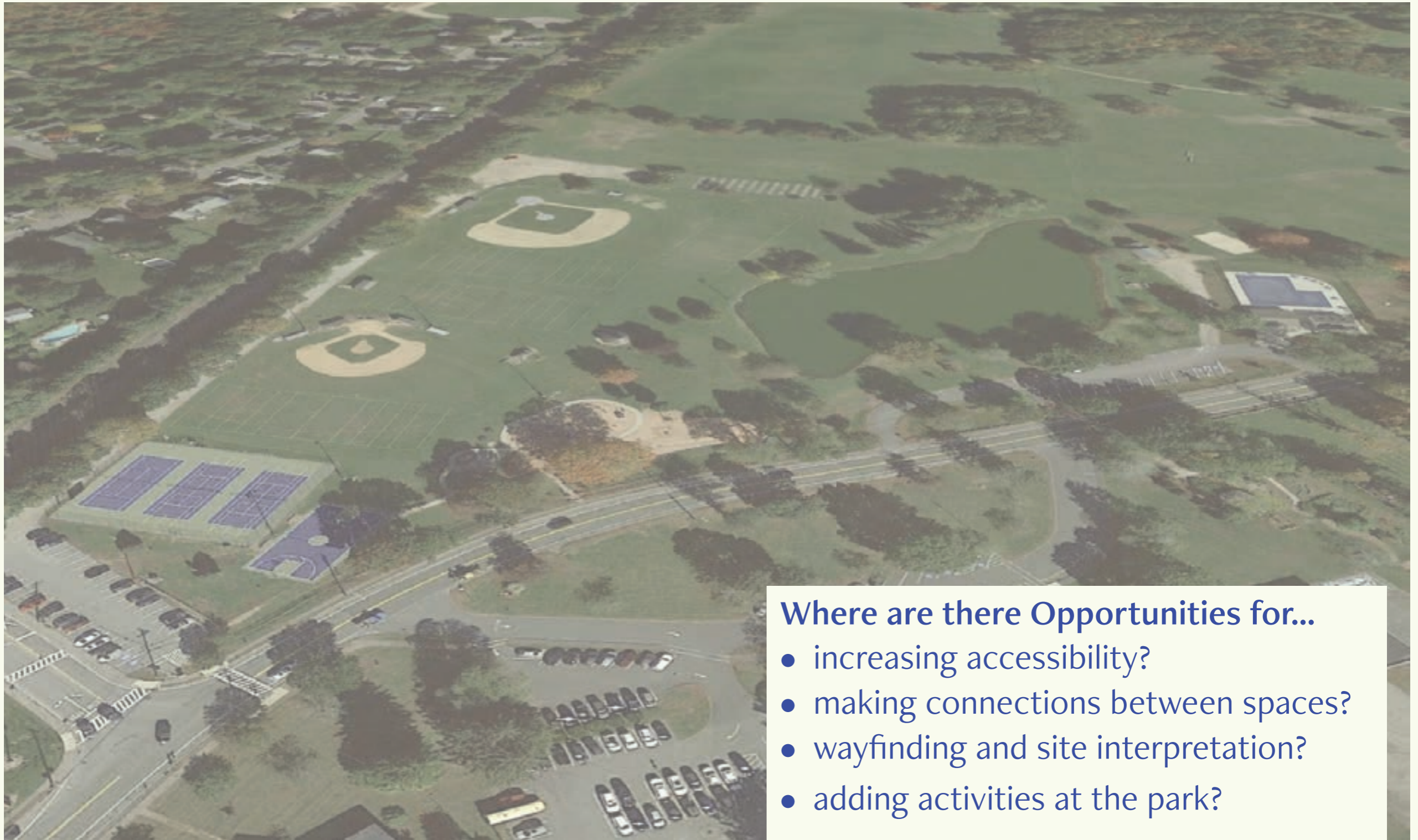
How do you use and enjoy the park in different seasons?

Do you have any special memories of the park?

Does the park feel welcoming and safe?



# COMMUNITY FEEDBACK



## Where are there Opportunities for...

- increasing accessibility?
- making connections between spaces?
- wayfinding and site interpretation?
- adding activities at the park?